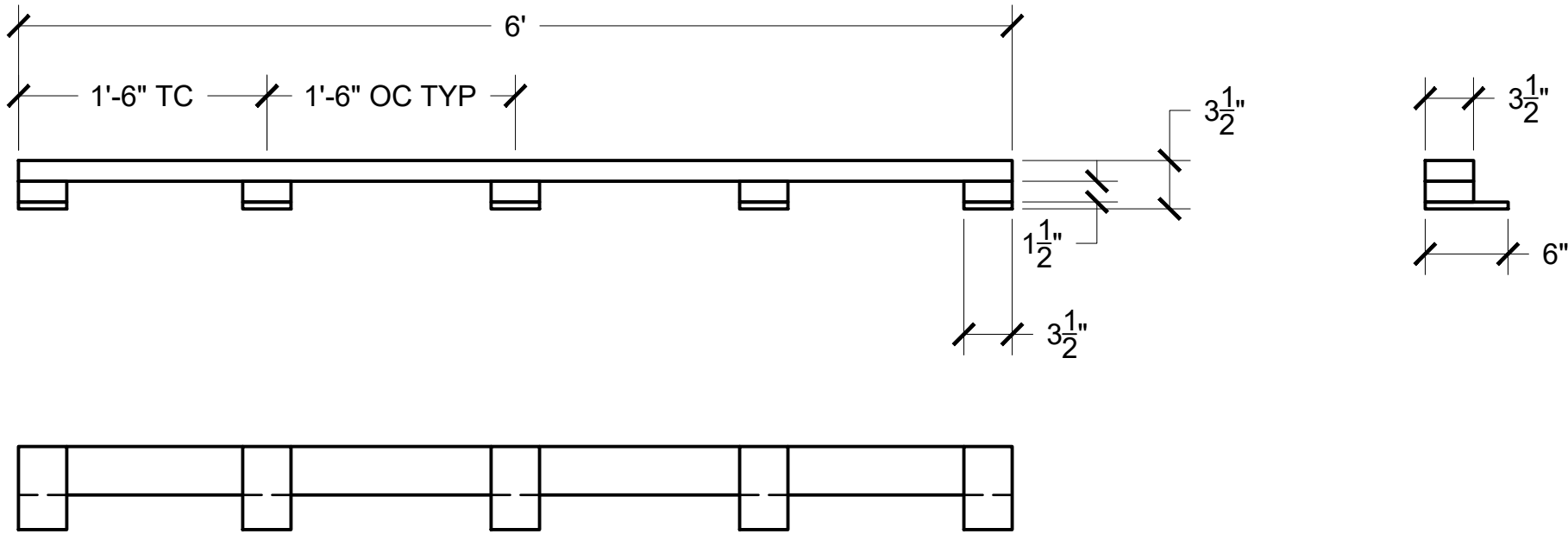
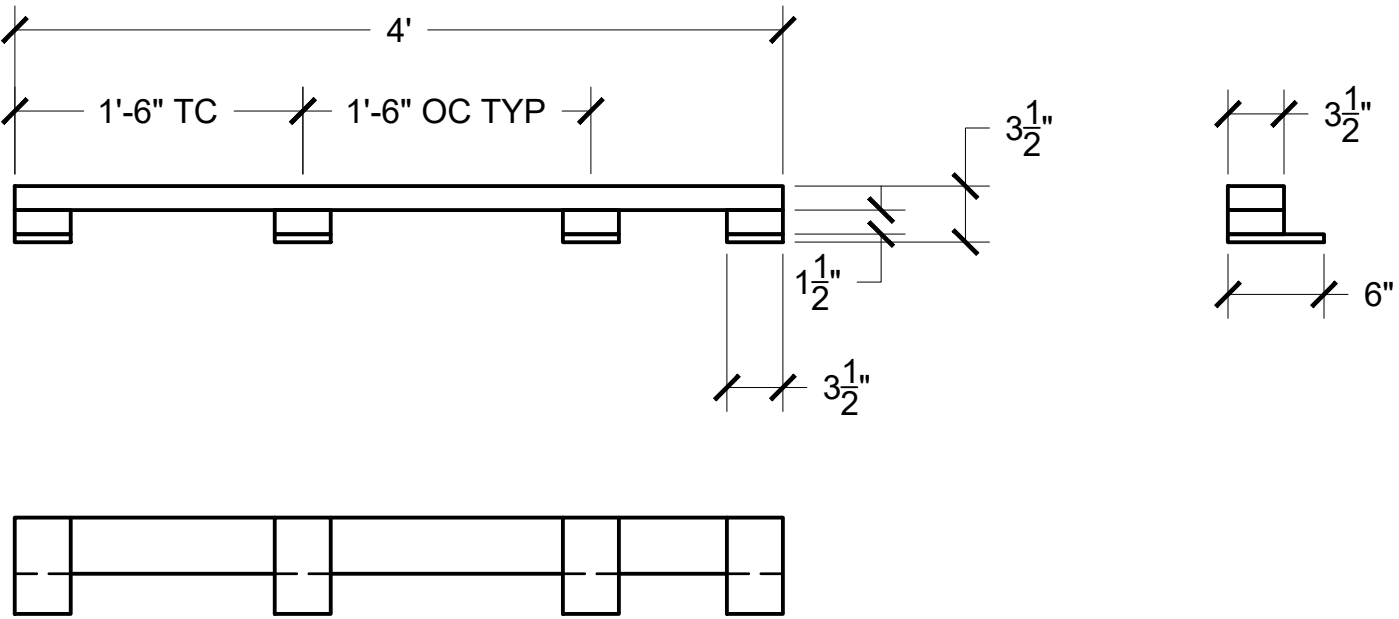
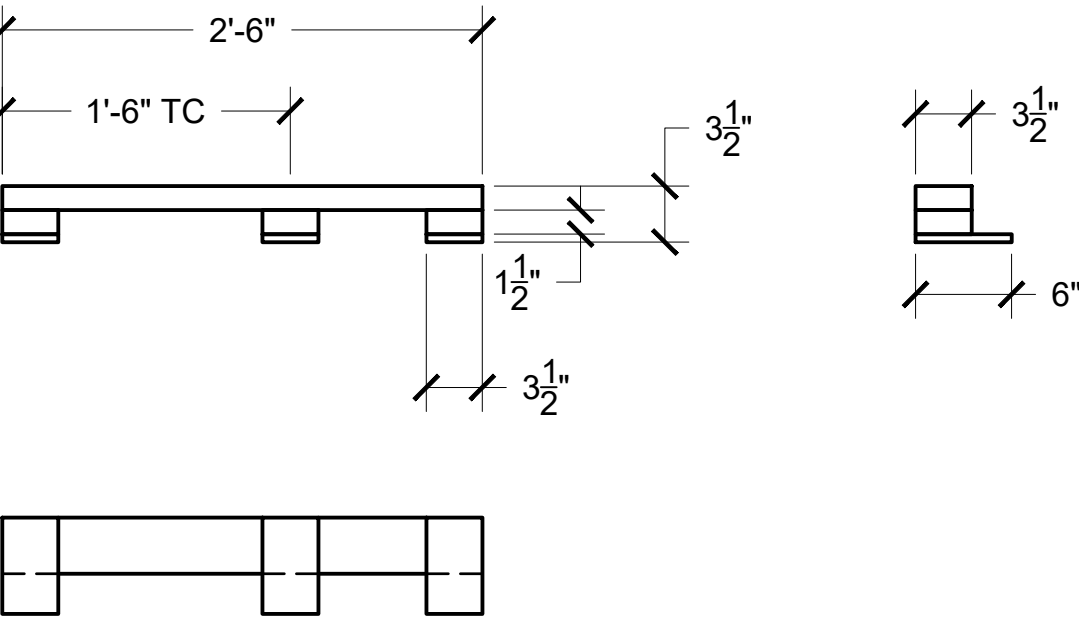


PRODUCED BY AN AUTODESK STUDENT VERSION

PRODUCED BY AN AUTODESK STUDENT VERSION



1  
DK1

GRAY

USE 2X4 FOR TOP PLATE  
USE 1/2" PLY FOR BOTTOM PLATE  
GLUE AND SCREW  
MAKE 11  
LABEL ALL GRAY

ORTHO  
1' = 1"

2  
DK1

ORANGE

USE 2X4 FOR TOP PLATE  
USE 1/2" PLY FOR BOTTOM PLATE  
GLUE AND SCREW  
MAKE 2  
LABEL BOTH ORANGE

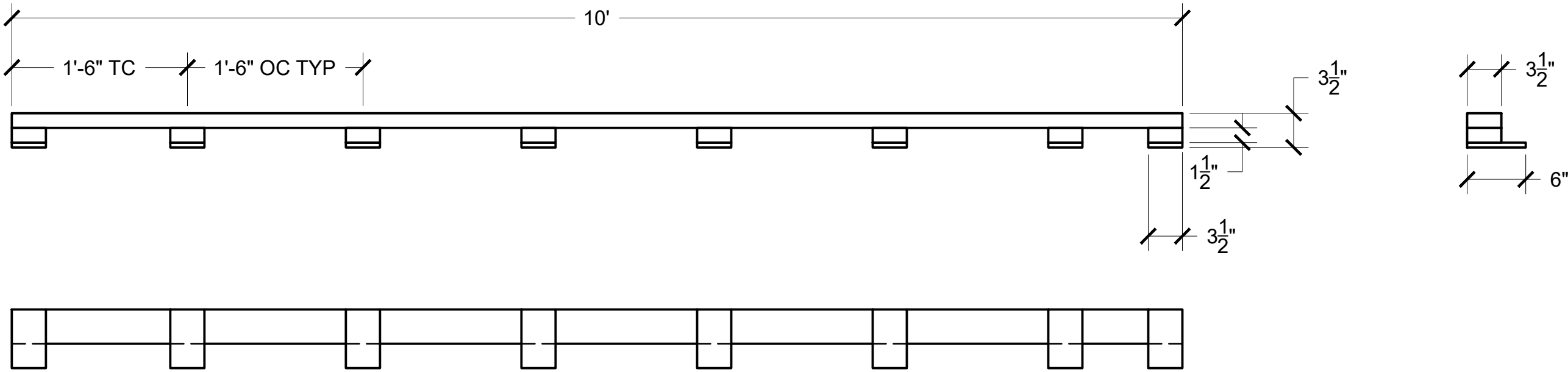
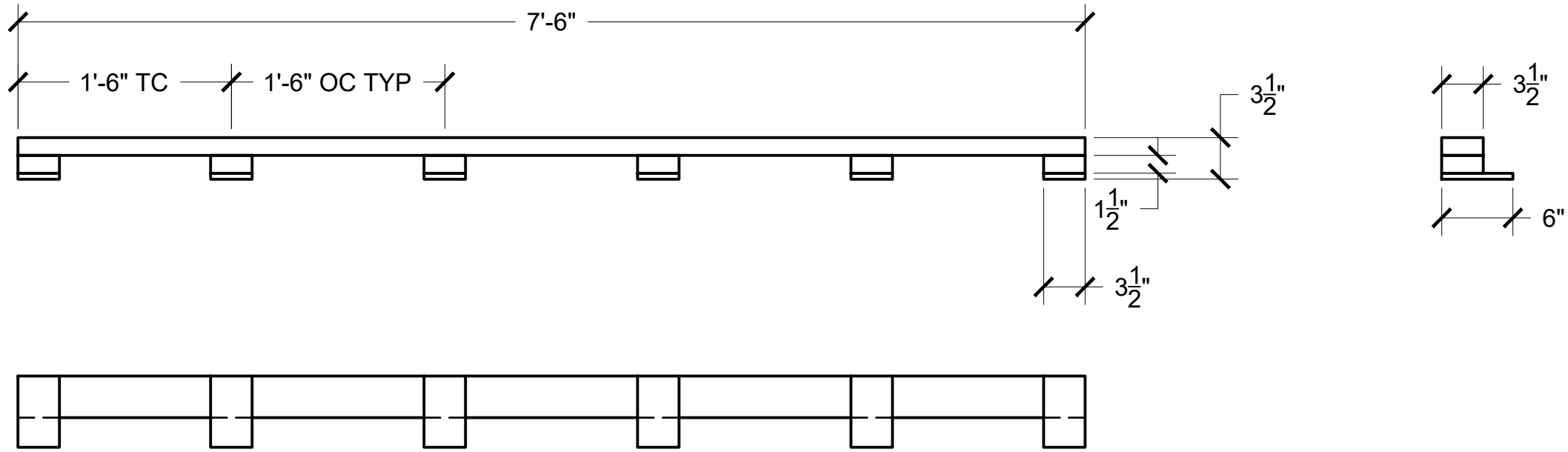
ORTHO  
1' = 1"

3  
DK1

BLUE

USE 2X4 FOR TOP PLATE  
USE 1/2" PLY FOR BOTTOM PLATE  
GLUE AND SCREW  
MAKE 12  
LABEL ALL BLUE

ORTHO  
1' = 1"



4  
DK1

PURPLE

USE 2X4 FOR TOP PLATE  
USE 1/2" PLY FOR BOTTOM PLATE  
GLUE AND SCREW  
MAKE 2  
LABEL BOTH PURPLE

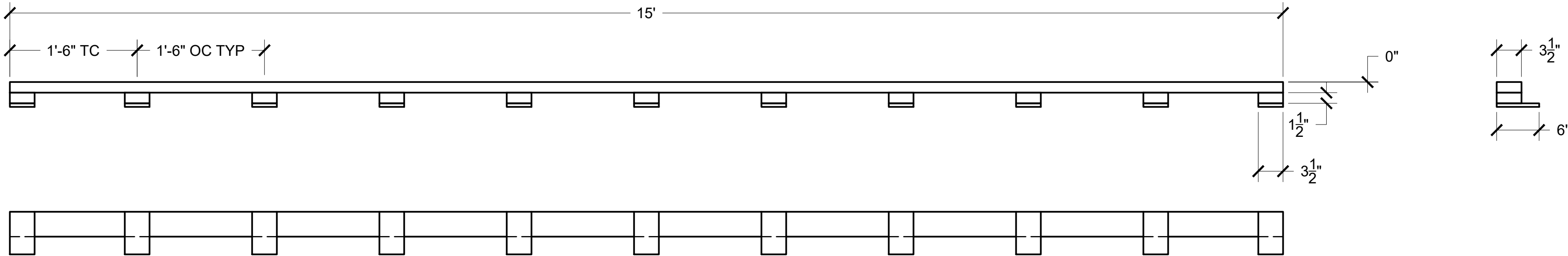
ORTHO  
1' = 1"

5  
DK1

TURQUOISE

USE 2X4 FOR TOP PLATE  
USE 1/2" PLY FOR BOTTOM PLATE  
GLUE AND SCREW  
MAKE 6  
LABEL ALL TURQUOISE

ORTHO  
1' = 1"



6  
DK1

GREEN

USE 2X4 FOR TOP PLATE  
USE 1/2" PLY FOR BOTTOM PLATE  
GLUE AND SCREW  
MAKE 11  
LABEL ALL GREEN

ORTHO  
1' = 1"



259 Fine Arts Building  
Tallahassee, FL 32304  
www.theatre.fsu.edu

# Chicago

6" DECK STUDWALLS

Richard G. Fallon Theater

DIRECTOR: Chris Nunez

DESIGNER: Teddy Moore

TECH DIR: Brock Baird

DWG BY: ALEX FARLEY

PLT DATE: 3/14/19

FILE NAME: Chicago Deck 3.14.19.c

SCALE: As Noted

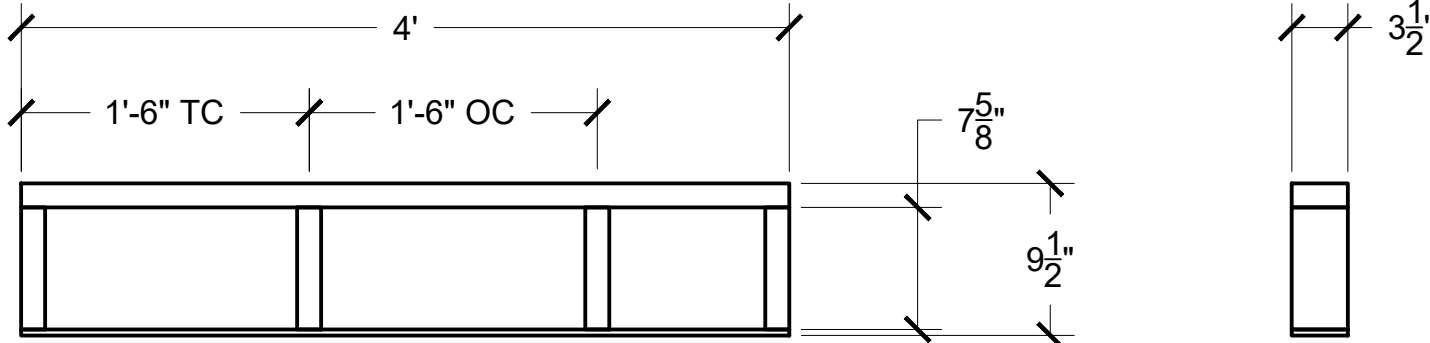
# DK1

PRODUCED BY AN AUTODESK STUDENT VERSION

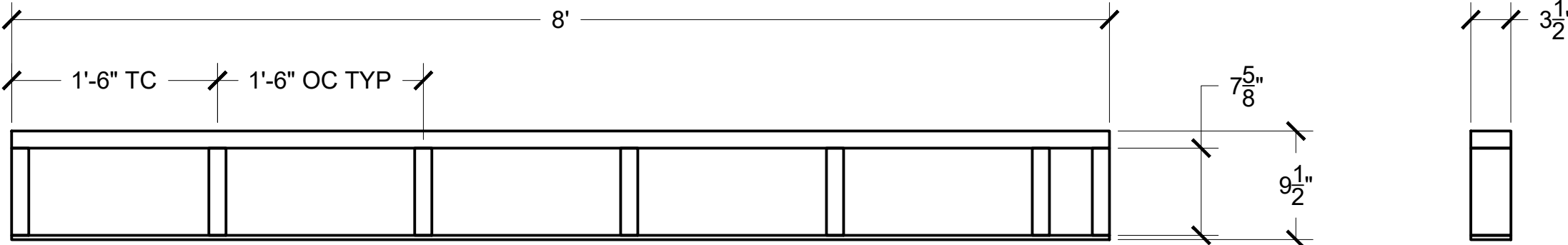
PRODUCED BY AN AUTODESK STUDENT VERSION

PRODUCED BY AN AUTODESK STUDENT VERSION

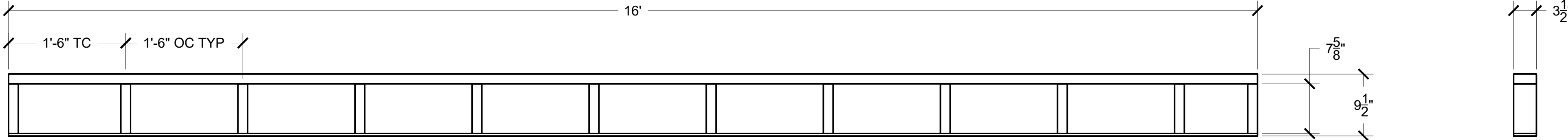
PRODUCED BY AN AUTODESK STUDENT VERSION



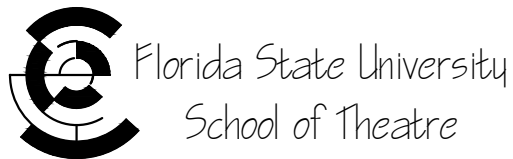
1 SW7 ORTHO  
DK2 USE 2X4 FOR TOP PLATE  
USE 3/8" PLY FOR BOTTOM PLATE  
GLUE AND SCREW  
MAKE 8  
LABEL ALL YELLOW  
1' = 1"



2 SW8 ORTHO  
DK2 USE 2X4 FOR TOP PLATE  
USE 1/2" PLY FOR BOTTOM PLATE  
GLUE AND SCREW  
MAKE 6  
LABEL ALL RED  
1' = 1"



3 SW9 ORTHO  
DK2 USE 2X4 FOR TOP PLATE  
USE 1/2" PLY FOR BOTTOM PLATE  
GLUE AND SCREW  
MAKE 3  
LABEL ALL MAGENTA  
1' = 1"



259 Fine Arts Building  
Tallahassee, FL 32304  
www.theatre.fsu.edu

# Chicago

PRODUCED BY AN AUTODESK STUDENT VERSION

## 12" DECK STUDWALLS

Richard G. Fallon Theater

DIRECTOR: Chris Nunez

DESIGNER: Teddy Moore

TECH DIR: Brock Baird

DWG BY: ALEX FARLEY

PLT DATE: 3/11/19

FILE NAME: Chicago Deck 3.14.19.c

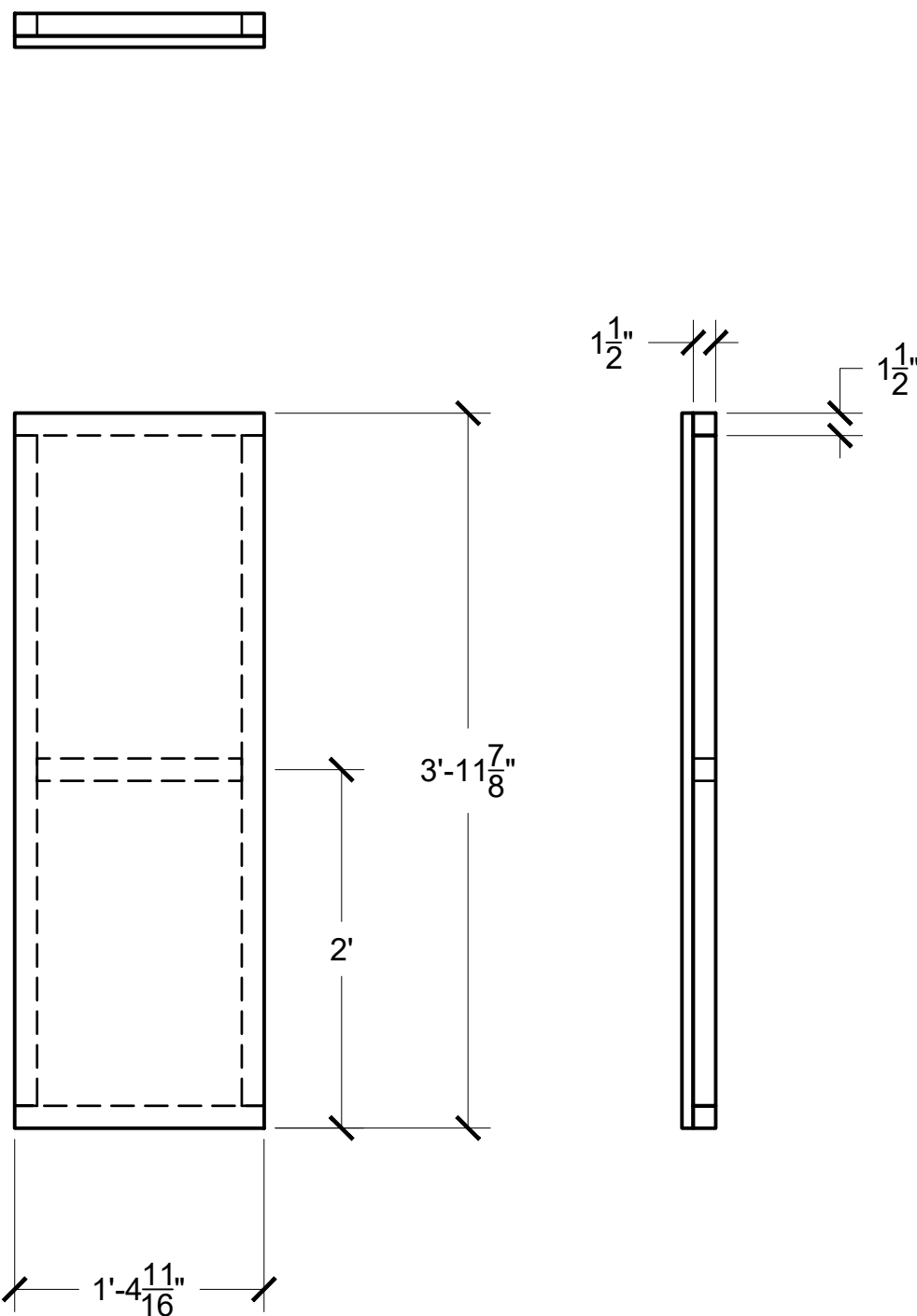
SCALE: As Noted

DK2

PRODUCED BY AN AUTODESK STUDENT VERSION

PRODUCED BY AN AUTODESK STUDENT VERSION

PRODUCED BY AN AUTODESK STUDENT VERSION



1 CP1 ORTHO  
DK3 BUILD USING 2X2 NOMINAL AND 3/4" PLY 1' = 1"  
GLUE AND SCREW  
MAKE 2  
LABEL BOTH CP1

PRODUCED BY AN AUTODESK STUDENT VERSION

# Chicago

CUSTOM DECKS	
Richard G. Fallon Theater	
DIRECTOR:	Chris Nunez
DESIGNER:	Teddy Moore
TECH DIR:	Brock Baird
DWG BY:	ALEX FARLEY
PLT DATE:	3/14/19
FILE NAME:	Chicago Deck 3.14.19.c
SCALE:	As Noted

DK3

PRODUCED BY AN AUTODESK STUDENT VERSION

# Chicago

PRODUCED BY AN AUTODESK STUDENT VERSION

## STUDWALL LAYOUT

Richard G. Fallon Theater

DIRECTOR:	Chris Nunez
DESIGNER:	Teddy Moore
TECH DIR:	Brock Baird
DWG BY:	ALEX FARLEY
PLT DATE:	3/11/19
FILE NAME:	Chicago Deck 3.14.19.c
SCALE:	As Noted

# DK4

PRODUCED BY AN AUTODESK STUDENT VERSION

PRODUCED BY AN AUTODESK STUDENT VERSION

PRODUCED BY AN AUTODESK STUDENT VERSION

MAGENTA TYP

RED TYP

YELLOW TYP

BLUE TYP

GRAY TYP

TURQUOISE TYP

ORANGE TYP

2' OC OF 2X4 TYP

GREEN TYP

PURPLE TYP

1  
DK4

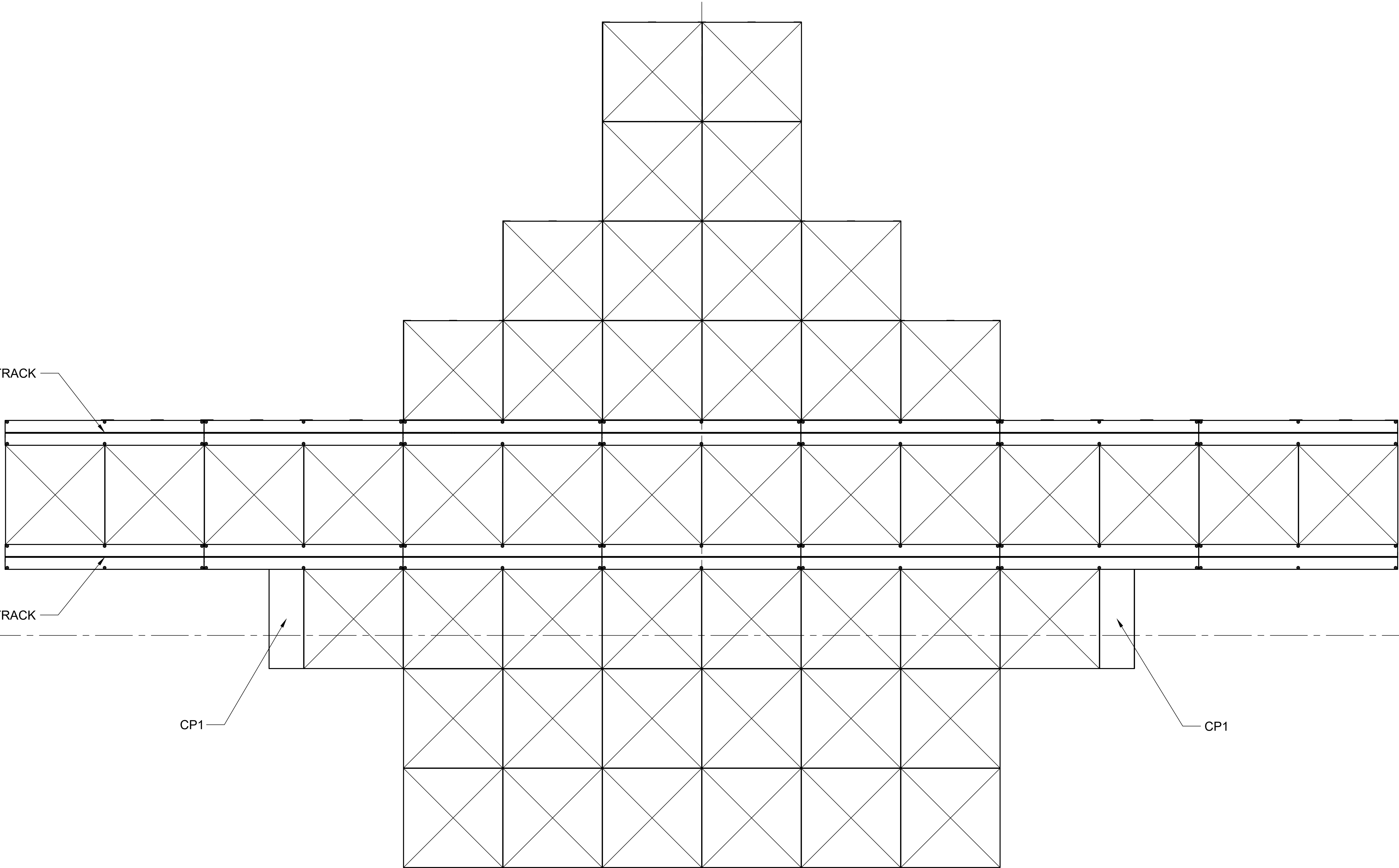
SWL  
START ON CENTER  
LAY OUT 2' CENTER TO CENTER

ORTHO  
1' = 1"

# Chicago

DECK LAYOUT	
Richard G. Fallon Theater	
DIRECTOR:	Chris Nunez
DESIGNER:	Teddy Moore
TECH DIR:	Brock Baird
DWG BY:	ALEX FARLEY
PLT DATE:	3/14/19
FILE NAME:	Chicago Deck 3.14.19.c
SCALE:	As Noted

DK5



1

DK5

DKL

ORTH0

"X" DENOTES STOCK TRISCUIT  
PULL 48 TRISCUITS  
DS ROW OF TRISCUITS OVERHANGS STUDWALLS BY 6"

1' = 1"

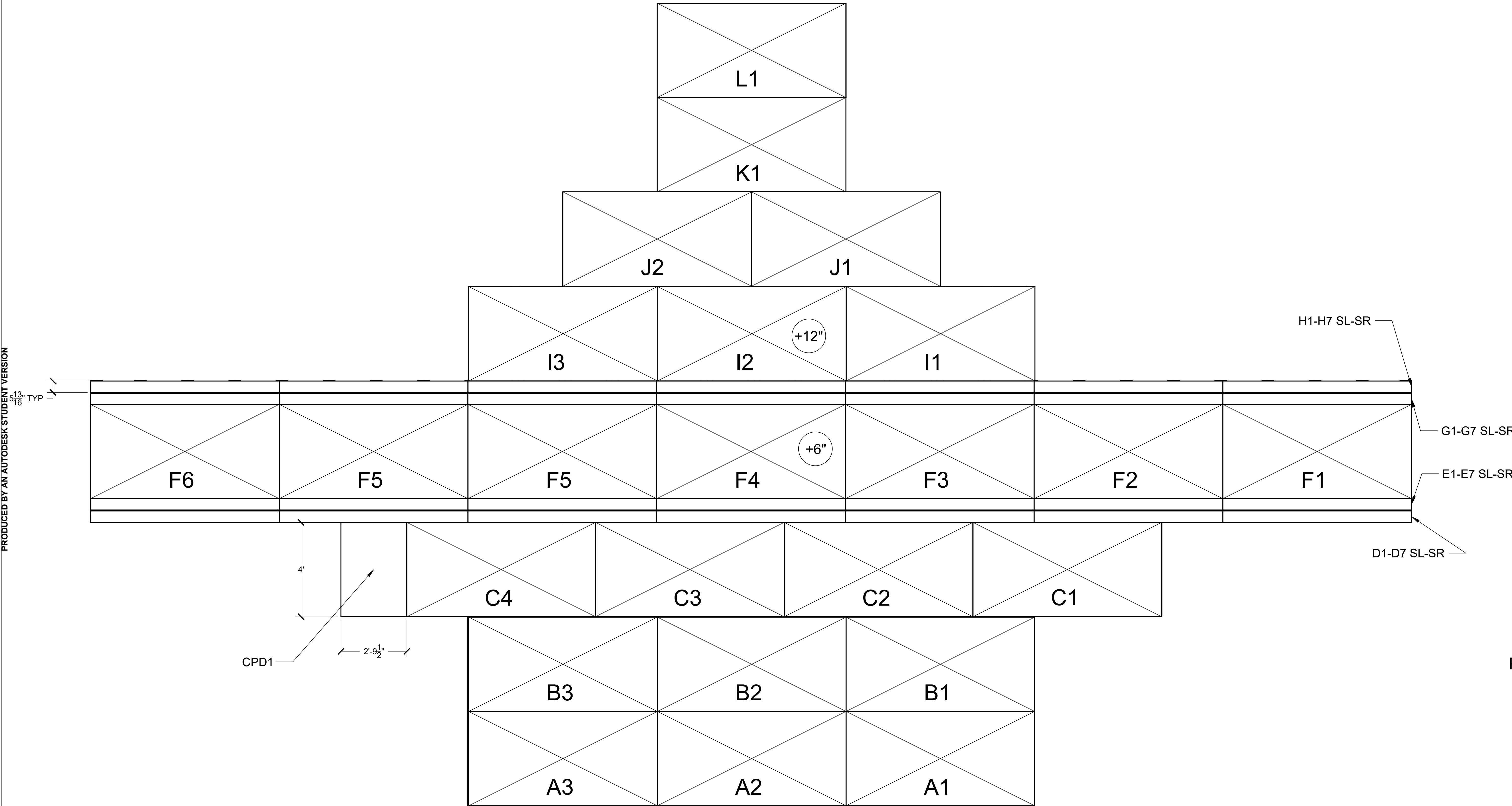
C

R

# Chicago

PRODUCED BY AN AUTODESK STUDENT VERSION

PRODUCED BY AN AUTODESK STUDENT VERSION



1

DK6

PDL

"X" DENOTES 4'X8' STOCK PAINT DECK - PULL 24  
USE 1/4" MDF FOR CUSTOM PIECES  
LABEL AS SHOWN  
THERE ARE 14 OF CPD2

PLAN

1" = 1"

## PAINT DECK LAYOUT

Richard G. Fallon Theater

DIRECTOR:	Chris Nunez
DESIGNER:	Teddy Moore
TECH DIR:	Brock Baird
DWG BY:	ALEX FARLEY
PLT DATE:	3/11/19
FILE NAME:	Chicago Deck 3.14.19.c
SCALE:	As Noted

# DK6

# Chicago

## LAUAN FACING

Richard G. Fallon Theater

DIRECTOR: Chris Nunez

DESIGNER: Teddy Moore

TECH DIR: Brock Baird

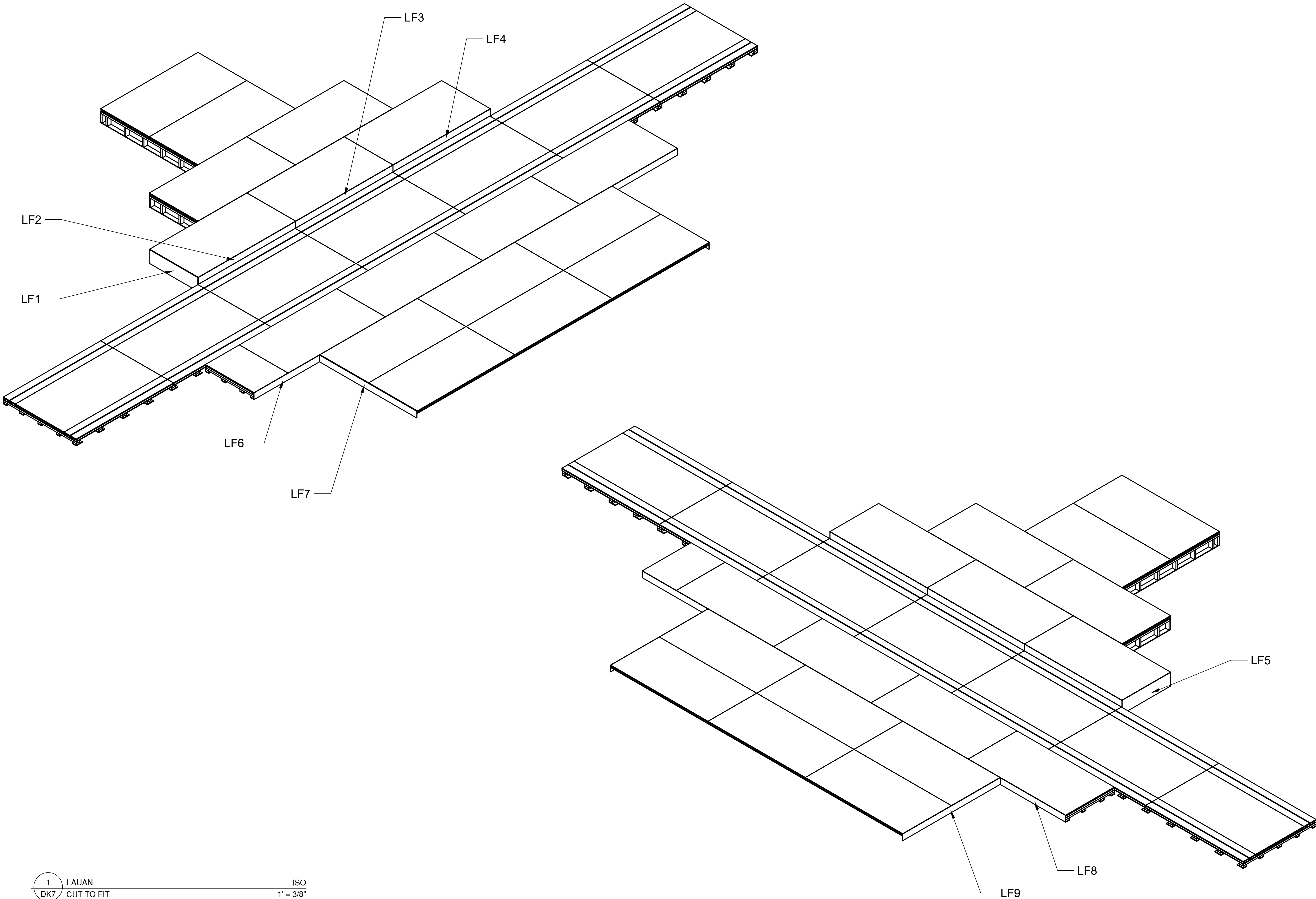
DWG BY: ALEX FARLEY

PLT DATE: 3/14/19

FILE NAME: Chicago Deck 3.14.19.c

SCALE: As Noted

# DK7



1 LAUAN ISO  
DK7 CUT TO FIT 1' = 3/8"  
LABEL AS SHOWN